

A TRIP TO OLYMPIC NATIONAL PARK AND THE ELWHA RIVER



ESSENTIAL QUESTION:

What combination of factors both natural and manmade is necessary for healthy river restoration and how does this enhance the sustainability of natural and human communities?

GUIDING QUESTION:

Where in the world are Olympic National Park and the Elwha River?

OVERVIEW:

In this lesson students will use web resources to find Olympic National Park and the Elwha River on a map. Students will generate a map which they will use as part of a in a travel brochure they will create for Olympic National Park and the Elwha River Valley.

TIME:

Two class periods

MATERIALS:

- Access to the internet/printer
- Travel brochures as examples
- 8.5 X 14 papers for brochures
- Basic art supplies -colored pencils, markers, glue, scissors
- Student pages (printable handout)
- Reflection Journal pages (printable handout)

PROCEDURE

1. Introduce Essential Question and Guiding Question. Give the students a few minutes to respond to the first Reflection Journal Page that take a few minutes to discuss their responses.
2. Help the students to find the Olympic Peninsula on a map and tell them that they are going to use a computer map generating program to create a map that shows Olympic National Park, the Elwha River and the surrounding towns at <http://www.nationalatlas.gov/>

3. Brainstorm some things travelers would want to know about an area they are going to visit and have students research those features in Olympic National Park and the Elwha Valley. Students will include those items along with the maps in a travel brochure they are going to create.
4. Handout the Student Page which will direct students to the web page and the Mapmaker. They can follow directions to create a map of the Olympic Peninsula which will include Olympic National Park, the Elwha River, Port Angeles, and Highway 101.
5. After students have created their map print them adjusting the size to fit a section of the 8.5 X11 paper that will be folded in thirds for the brochure.
6. Students can then begin research on the sights and features of the Elwha Valley in Olympic National Park for their travel brochures.
7. Finally, students will create a destination map from whatever city or town they are at to Olympic National Park.
8. Have students take a few minutes to respond to the second Reflection Journal page.

ASSESSMENTS:

- Reflection Journal Pages (rubric included)
- Brochure (rubric included)

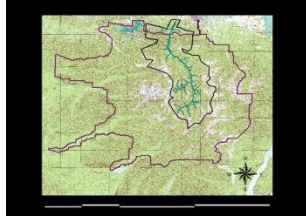
WASHINGTON STATE STANDARDS:

WRITING

1. **EALR 1:** The student understands and uses a writing process.
2. **EALR 2:** The student writes in a variety of forms for different audiences and purposes.
3. **EALR 3:** The student writes clearly and effectively.

SOCIAL STUDIES:

1. **EALR 3: GEOGRAPHY** The student uses a spatial perspective to make reasoned decisions by applying the concepts of location, region, and movement and demonstrating knowledge of how geographic features and human cultures impact environments.
 - a. **Component 5.2:** Uses inquiry-based research.
 - i. **5.2.1** Creates and uses research questions that are tied to an essential question to focus inquiry on an issue.



**Elwha River Restoration
A Trip to Olympic National Park and the Elwha River
Reflection Journal 1**

If you've visited Olympic National Park, where is it and what does it look like? If you haven't visited Olympic National Park, where do you think it is and what do you imagine it looks like?



Elwha River Restoration A Trip to Olympic National Park and the Elwha River Student Page

YOUR TASK:

Olympic National Park is the wild heart of the beautiful Olympic Peninsula. Established in 1897, Olympic National Park grew to its present size of 922,651 acres of mountains, forests, and seashore by 1953. Within Olympic National Park is the Elwha River where two dams will be removed in order to restore the salmon that once graced the river with their beauty and abundance. The removal of the Elwha Dams and the restoration of a once free river is important because it is the largest dam removal project in America to date. Your job is to create a travel brochure for tourists who are interested in visiting Olympic National Park and seeing the Elwha River.

You will begin your brochure project by generating a map of the Olympic Peninsula that includes Olympic National Park, the Elwha River, the nearby town of Port Angeles and Highway 101.

Here's how to do it:

1. Go to <http://www.nationalatlas.gov/> and click on Map Maker.
2. Find Washington State on the map and click two times to enlarge the area. Next move the cursor over to the Olympic Peninsula in the North West part of Washington state and click twice to enlarge.
3. Now it's time to give your map features. On the right side of the screen you will see three cards labeled "Map Layers," "Map Key," and "Find." On the "Map Layers" card go to the section labeled "Boundaries" and check the box for "Federal Lands." Go to the top of the card and click "Redraw Map." and voila Olympic National Park will magically appear.
4. Next go to the "Basic Maps" section of the "Map Layers" card and check "Cities and Towns," and "Streams and Waterbodies" go back to the top of the card and click "Redraw Map" and magically the town of Port Angeles appears along with streams and waterbodies.
5. Then go to the card labeled "Find." In the box marked "Find a Place" you need to type Elwha River into the "Feature Name" section and click on "Find it." A box titled "Feature Name" should come up, click on feature #1 which will bring up a "Feature Location" box, click "Zoom to Feature" to get the Elwha River labeled on your map.

6. Go back to the “Map Layers” card and click on “Transportation.” Check the “Roads” section and the “US Highway Labels” box. Click on “Redraw Map” and more magic causes US Highway 101 to appear.
7. Finally, print your map. You will want to preview the map before you print it I reduced the map to 30% in order to get the whole view small enough to fit my brochure. Print and cut out the map to paste in your brochure.

To Make your Brochure:

1. Fold a piece of 8.5 X 11 paper long ways into thirds. Your teacher may have some examples to show you.
2. The cover page should show the place of interest and have a title. Inside should show various subjects of interest for the tourist. Brain storm some ideas for things you would be interested in seeing in the Elwha River Valley and in Olympic National Park. Be sure and include your map somewhere inside your brochure. Make the brochure colorful and interesting for your audience. Remember a travel brochure is trying to sell an area as a point of interest to a tourist.
3. Finally include a map that shows how to get to Olympic National Park from your town. Go to Google Maps <http://maps.google.com/> and click on “Get Directions” in the “A” box write your town and state, in the “B” box write Port Angeles, Washington (Olympic National Park’s main Visitors Center is in Port Angeles), click on “Get Directions” then preview, reduce and print the map to fit in your brochure.

For information on Olympic National Park and the Elwha River check out these web sites:

<http://www.nps.gov/olym/>

<http://www.olympic.national-park.com/>

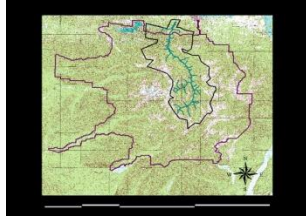
http://gorp.away.com/gorp/resource/us_national_park/wa_olymp.htm

http://ngm.nationalgeographic.com/ngm/0407/feature3/online_extra.html

<http://www.nps.gov/olym/planyourvisit/upload/elwha.pdf>

<http://www.elwhabiodiversity.org/>

Have fun and enjoy your virtual journey! Don’t forget to cite your sources.



Elwha River Restoration
A Trip to Olympic National Park and the Elwha River
Reflection Journal 2

What did you find out about Olympic National Park and the Elwha River? What would you do if you visited there?

Reflection Journal Rubric

Outstanding response (4)

An outstanding reflection journal response is an original, thought-provoking response to the questions raised in the prompt. It contains specific examples from both the student's experiences as well as the classroom material whenever possible. It asks original, provocative, relevant questions. It is also virtually free of grammatical errors.

Above-average response (3)

An above-average journal thoroughly addresses the questions raised in the prompt. It contains specific examples from both personal experiences as well as the classroom material whenever possible. It asks provocative, relevant questions. It may contain some minor grammatical errors.

Average response (2)

An average journal competently addresses the issue raised in the prompt. It contains some examples from both personal experiences as well as the classroom material whenever possible. It asks relevant questions. Grammatical errors may be present, but they will not impede the reader from understanding the context of the sentences.

Below-average response (1)

A below-average journal does not competently address the issue raised in the prompt. It contains few examples from personal experiences or the classroom material. It asks easy questions. Grammatical errors are so rampant that they impede the reader from understanding the context of the sentences.

Failure to respond to the assigned prompt (0)

A failing journal does not address the issue raised in the prompt at a middle school level. It contains very few examples of personal experiences as well as classroom material, or the student fails to respond at all. Grammatical errors are so rampant that they impede the reader from understanding the context of the sentences.

CATEGORY	4	3	2	1
Graphics/Pictures	Graphics go well with the text and there is a good mix of text and graphics. The two required maps are included.	Graphics go well with the text, but there are so many that they distract from the text. The two required maps are included.	Graphics go well with the text, but there are too few and the brochure seems "text-heavy". One of the two required maps is included.	Graphics do not go with the accompanying text or appear to be randomly chosen. Maps are inaccurate or missing
Attractiveness & Organization	The brochure has exceptionally attractive formatting and well-organized information.	The brochure has attractive formatting and well-organized information.	The brochure has well-organized information.	The brochure's formatting and organization of material are confusing to the reader.
Content - Accuracy	All facts in the brochure are accurate.	99-90% of the facts in the brochure are accurate.	89-80% of the facts in the brochure are accurate.	Fewer than 80% of the facts in the brochure are accurate.
Writing - Organization	Each section in the brochure has a clear beginning, middle, and end.	Almost all sections of the brochure have a clear beginning, middle and end.	Most sections of the brochure have a clear beginning, middle and end.	Less than half of the sections of the brochure have a clear beginning, middle and end.
Writing - Grammar	There are no grammatical mistakes in the brochure.	There are no grammatical mistakes in the brochure after feedback from an adult.	There are 1-2 grammatical mistakes in the brochure even after feedback from an adult.	There are several grammatical mistakes in the brochure even after feedback from an adult.
Spelling & Proofreading	No spelling errors remain after one person other than the typist reads and corrects the brochure.	No more than 1 spelling error remains after one person other than the typist reads and corrects the brochure.	No more than 3 spelling errors remain after one person other than the typist reads and corrects the brochure.	Several spelling errors in the brochure.
Writing - Mechanics	Capitalization and punctuation are correct throughout the brochure.	Capitalization and punctuation are correct throughout the brochure after feedback from an adult.	There are 1-2 capitalization and/or punctuation errors in the brochure even after feedback from an adult.	There are several capitalization or punctuation errors in the brochure even after feedback from an adult.
Sources	Careful and accurate records are kept to document the source of 95-100% of the facts and graphics in the brochure.	Careful and accurate records are kept to document the source of 94-85% of the facts and graphics in the brochure.	Careful and accurate records are kept to document the source of 84-75% of the facts and graphics in the brochure.	Sources are not documented accurately or are not kept on many facts and graphics.

Rubistar Rubric